

ألمنيوم ديزاين
Aluminum Design 

High-End
Doors And Windows Customization



CONTENTS

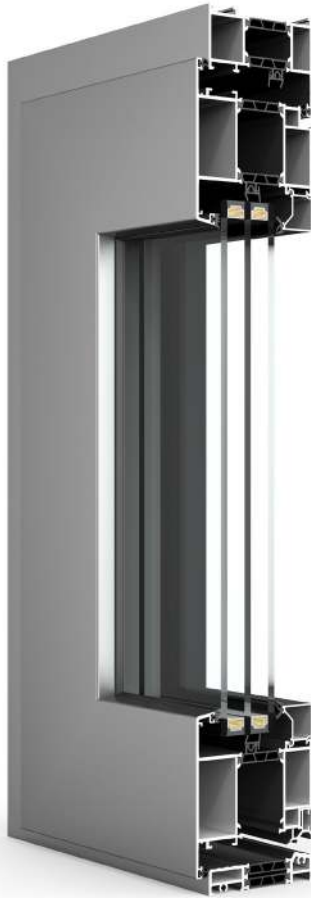
80 series Thermal Break Aluminum Casement Window and Door	قطعا 80 العازل للحرارة نوافذ مفصليّة وأبواب	03
70 series Thermal Break Aluminum Casement Window and Door	قطعا 70 العازل للحرارة نوافذ مفصليّة وأبواب	05
50 series Aluminum Casement Window and Door	قطعا 50 نوافذ مفصليّة وأبواب	07
80 series Thermal Break Aluminum Folding Door	قطعا 80 نوافذ مفصليّة وأبواب	09
68 PLUS series Thermal Break Aluminum Folding Door	قطعا بلاس 68 باب قابل للطي العازل للحرارة	11
68 series Thermal Break Aluminum Folding Window and Door	قطعا 68 العازل للحرارة نوافذ وإبواب قابلة للطي	13
140 series Thermal Break Aluminum Heavy-Duty Sliding Door	قطعا 140 العازل للحرارة نوافذ سحب	15
205 series Thermal Break Aluminum Heavy-Duty Sliding Door	قطعا 205 العازل للحرارة نوافذ سحب	17
135 series Thermal Break Aluminum Heavy-Duty Sliding Door	قطعا 135 العازل للحرارة نوافذ سحب	19
120 series Thermal Break Aluminum Sliding Window and Door with Screen	قطعا 120 العازل للحرارة نوافذ سحب وشبك	21
96 series Aluminum Sliding Door	قطعا 96 العازل للحرارة نوافذ سحب وشبك	23
75 series Thermal Break Slim-Frame Aluminum Casement Window and Door	قطعا 75 العازل للحرارة نوافذ مفصليّة وأبواب	25
73-65 series Thermal Break Slim-Frame Aluminum Folding Door	قطعا 65-73 العازل للحرارة باب قابل للطيء بإطار نحيف	27
116 series Thermal Break Slim-Frame Aluminum Sliding Door	قطعا 116 العازل للحرارة نوافذ سحب بإطار نحيف	29
110 series Thermal Break Slim-Frame Aluminum Sliding Window	قطعا 110 العازل للحرارة نوافذ سحب بإطار نحيف	31
147 series Aluminum Exposed-Frame Curtain Wall	قطعا 147 أنظمة كارتن وول ظاهرة	33
100-65 series Aluminum Hidden-Frame Curtain Wall	قطعا 65 - 100 أنظمة كارتن وول بإطارات مخفية	35
100 series Aluminum Entry Door	قطعا 100 أبواب مداخل	36

80 series Thermal Break

Aluminum Casement Window and Door

قطاع 80 العازل للحرارة

نوافذ مفصليّة وأبواب



Product Attributes

Outer Frame Thickness	1.8mm
Window Panel Thickness	1.8mm
Door Panel Thickness	2.0mm
Width Limit	520mm-800mm
Height Limit	700mm-1500mm
Glass Specification	Regular Glass Hollow 5MM+27A+5MM Triple Glass 5MM+12A+5MM+15MM+5MM
Thermal Insulation Strip Thickness	0.8mm
Hardware Brand	KINLONG

Performance Parameter

U Value (BTU/ft ² · hr · ° F)	0.229
Water Penetration (Pa)	260
Serviceability Limit State (SLS)	1680
Ultimate Limit State (ULS)	2520

The performance parameters in the table have been obtained through AAMA/ CSA/NAFS testing, and the system structure can be adjusted according to project performance requirements to achieve higher parameters.

Detail Display





70 series Thermal Break Aluminum Casement Window and Door

قطاع 70 العازل للحرارة نوافذ مفصلية وأبواب



Product Attributes

Outer Frame Thickness	1.8mm
Window Panel Thickness	1.4mm
Door Panel Thickness	1.7mm
Width Limit	520mm-800mm
Height Limit	700mm-1500mm
Glass Specification	Regular Glass Hollow 5MM+19A+5MM Maximum Glass Hollow 5MM+27A+5MM
Thermal Insulation Strip Thickness	2.0mm
Hardware Brand	KINLONG

Performance Parameter

U Value (BTU/ft ² · hr · ° F)	0.229
Water Penetration (Pa)	260
Serviceability Limit State (SLS)	1680
Ultimate Limit State (ULS)	2520

The performance parameters in the table have been obtained through AAMA/CSA/NAFS testing, and the system structure can be adjusted according to project performance requirements to achieve higher parameters.

Detail Display





50 series

Aluminum Casement Window and Door

قطاع 50
نوافذ مفصليّة وأبواب



Product Attributes

Outer Frame Thickness	1.4mm
Window Panel Thickness	1.4mm
Door Panel Thickness	1.8mm
Width Limit	600mm–900mm
Height Limit	1800mm–2400mm
Glass Specification	Regular Glass Hollow 5MM+6A+5MM

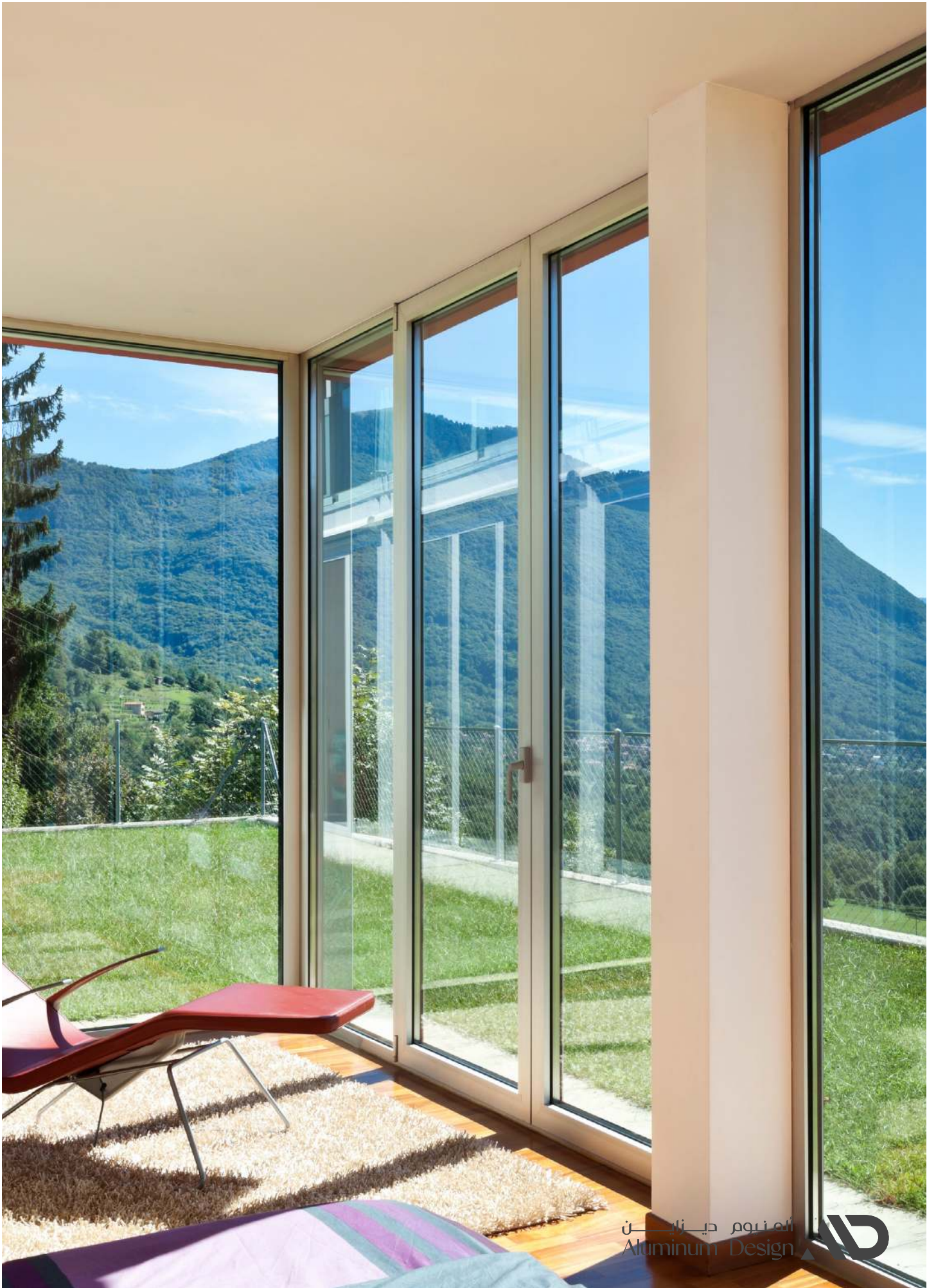
Performance Parameter

U Value (BTU/ft ² · hr · ° F)	0.229
Water Penetration (Pa)	260
Serviceability Limit State (SLS)	1680
Ultimate Limit State (ULS)	2520

The performance parameters in the table have been obtained through AAMA/ CSA/NAFS testing, and the system structure can be adjusted according to project performance requirements to achieve higher parameters.

Detail Display





80 series

Thermal Break Aluminum Folding Door

قطاع 80

نوافذ مفصليّة وأبواب



Product Attributes

Opening Method	Folding
Min Size	Panel Height: 2000mm; Panel Width: 500mm
Max Size	Panel Height: 4500mm; Panel Width: 850mm
Max Load	Single Panel 120KG
Glass Specifications	5+27A+5
Hardware Brand	Kerssenberg

Performance Parameter

U Value (BTU/ft ² · hr · ° F)	0.229
Water Penetration (Pa)	260
Serviceability Limit State (SLS)	1680
Ultimate Limit State (ULS)	2520

The performance parameters in the table have been obtained through AAMA/ CSA/NAFS testing, and the system structure can be adjusted according to project performance requirements to achieve higher parameters.

Detail Display





68 PLUS series

Thermal Break Aluminum Folding Door

قطاع 68 بلس
باب قابل للطي عازل للحرارة



Product Attributes

Opening Method	Folding
Min Size	Panel Height: 2000mm; Panel Width: 400mm
Max Size	Panel Height: 3200mm; Panel Width: 900mm
Max Load	Single Pane 100KG
Glass Specifications	5+27A+5
Hardware Brand	Kerssenberg

Performance Parameter

U Value (BTU/ft ² · hr · ° F)	0.229
Water Penetration (Pa)	260
Serviceability Limit State (SLS)	1680
Ultimate Limit State (ULS)	2520

The performance parameters in the table have been obtained through AAMA/ CSA/NAFS testing, and the system structure can be adjusted according to project performance requirements to achieve higher parameters.

Detail Display





68 series Thermal Break Aluminum Folding Window and Door

قطاع 68 العازل للحرارة نوافذ وابواب قابلة للطي



Product Attributes

Opening Method	Folding and Sliding
Min Size	Door Leaf Height: 2000mm; Door Leaf Width: 400mm;
Max Size	Door Leaf Height: 3500mm; Door Leaf Width: 850mm;
Max Load	Single Leaf : 100KG
Glass Specifications	5mm+27A+5mm
Hardware Brand	Kerssenberg

Performance Parameter

U Value (BTU/ft ² · hr · ° F)	0.229
Water Penetration (Pa)	260
Serviceability Limit State (SLS)	1680
Ultimate Limit State (ULS)	2520

The performance parameters in the table have been obtained through AAMA/ CSA/NAFS testing, and the system structure can be adjusted according to project performance requirements to achieve higher parameters.

Detail Display



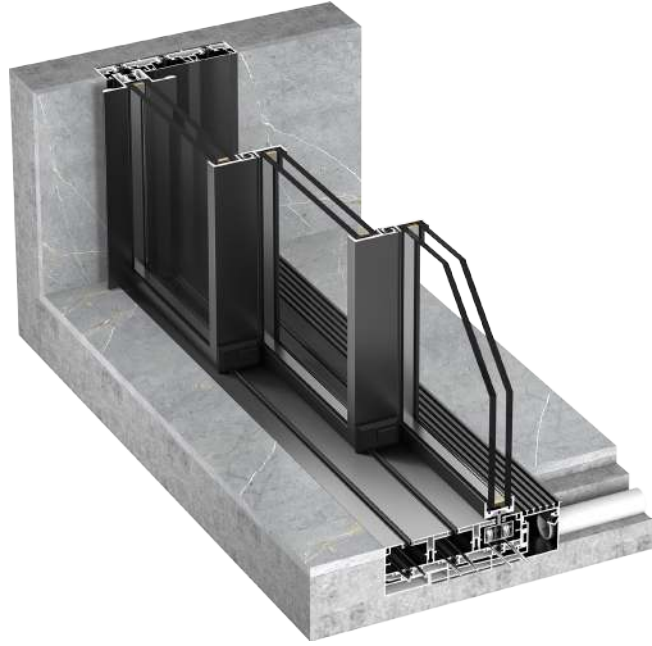


140 series Thermal Break

Aluminum Heavy-Duty Sliding Door

قطاع 140 العازل للحرارة

نوافذ سحب



Profile: Aluminum 6063-T5

Profile thickness: 2.0mm

Seal: EPDM sealing strips

Glass: Tempered 6mm+6mm triple layer glass, argon gas

Heat and cold insulation: PA66+FG25 Brand thermally broken

Hardware: USA brand CMEC handle key lock

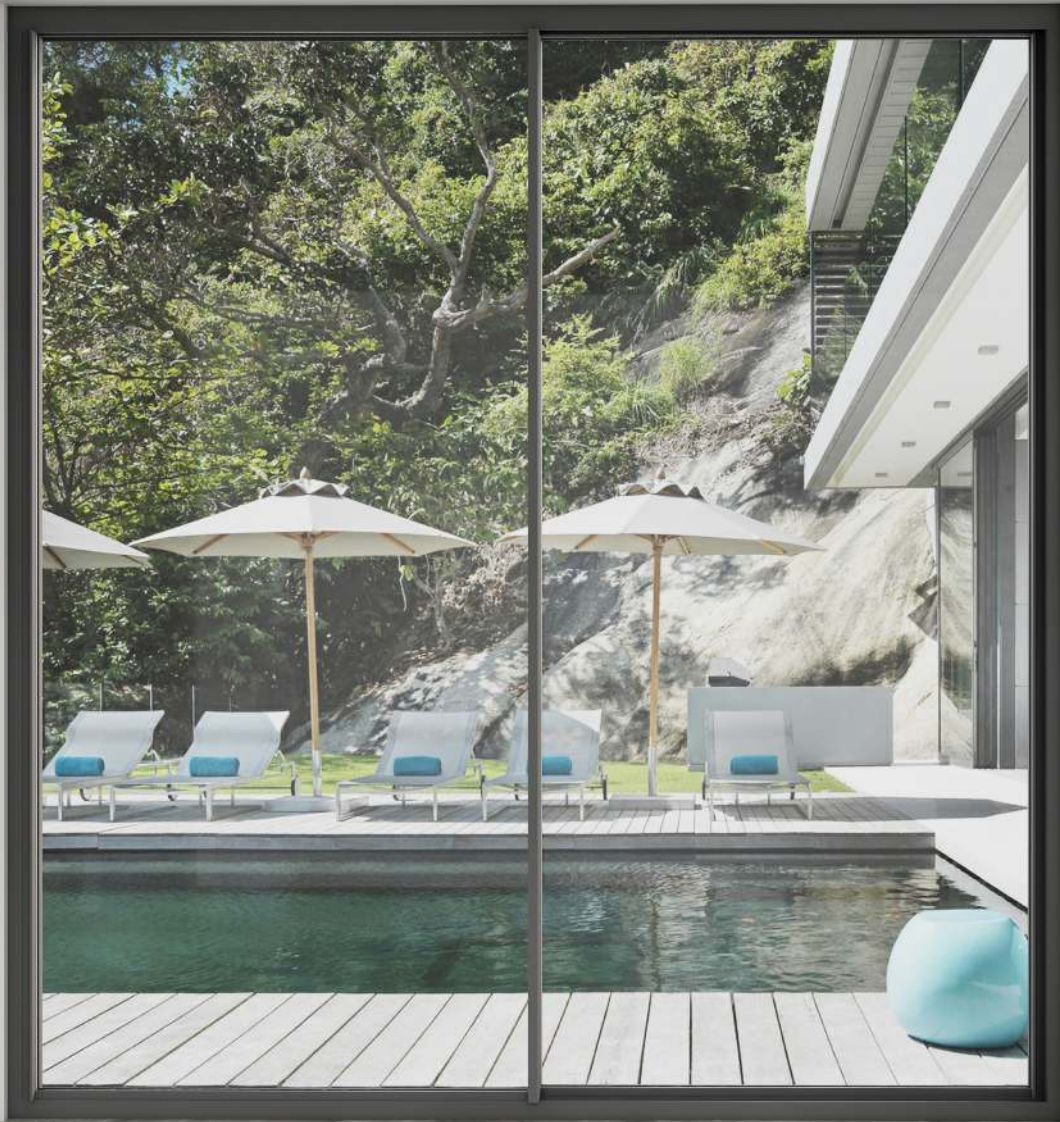
Advantage s :

Slim at all profile, 25mm

flush floor track, outdoor and indoor

Detail Display





205 series Thermal Break العازل للحرارة

Aluminum Heavy-Duty Sliding Door

نوافذ سحب



Opening Method	Lifting sliding
Min Size	Panel Height : 1500mm ; Panel Width : 600mm
Max Size	Panel Height : 3200mm ; Panel Width : 2000mm
Max Load	Single Panel 1200 KG
Glass Specifications	5+15A+ 5
Hardware Brand	HOP O

Performance Parameter

U Value (BTU/ft ² ·hr·°F)	0.229
Water Penetration (Pa)	260
Serviceability Limit State (SIS)	1680
Ultimate Limit State (ULS)	2520

The performance parameters in the table have been obtained through AAMA/CSA/NAFIS testing, and the system structure can be adjusted according to project performance requirements to achieve higher parameters.





135 series Thermal Break قطع 135 العازل للحرارة

Aluminum Heavy-Duty Sliding Door نوافذ سحب



Product Attributes

Opening Method	Lifting sliding
Min Size	Panel Height: 1500mm; Panel Width: 600mm
Max Size	Panel Height: 3200mm; Panel Width: 2000mm
Max Load	Single Panel 200KG
Glass Specifications	5+15A+5
Hardware Brand	HOPO

Performance Parameter

U Value (BTU/ft ² · hr · ° F)	0.229
Water Penetration (Pa)	260
Serviceability Limit State (SLS)	1680
Ultimate Limit State (ULS)	2520

The performance parameters in the table have been obtained through AAMA/ CSA/NAFS testing, and the system structure can be adjusted according to project performance requirements to achieve higher parameters.

Detail Display





120 series Thermal Break قطع العازل للحرارة

Aluminum Sliding Window and Door with Screen نوافذ سحب وشبك



Product Attributes

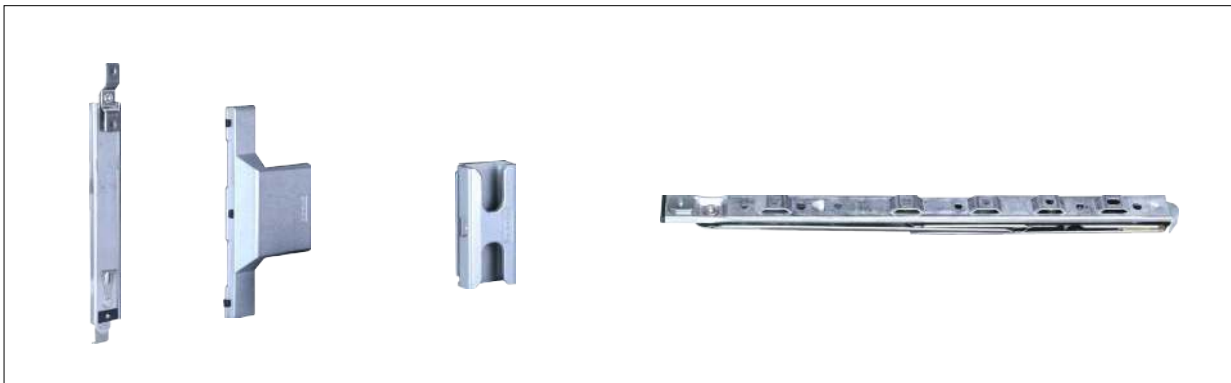
Opening Method	Sliding
Min Size	Panel Height: 400mm; Panel Width: 400mm
Max Size	Panel Height: 2300mm; Panel Width: 1800mm
Max Load	Single Panel 150KG
Glass Specifications	5+10A+5
Hardware Brand	HOPO / KINLONG

Performance Parameter

U Value (BTU/ft ² · hr · ° F)	0.229
Water Penetration (Pa)	260
Serviceability Limit State (SLS)	1680
Ultimate Limit State (ULS)	2520

The performance parameters in the table have been obtained through AAMA/ CSA/NAFS testing, and the system structure can be adjusted according to project performance requirements to achieve higher parameters.

Detail Display





قطاع 96 العازل للحرارة 96 series Aluminum Sliding Door

نوافذ سحب وشبك Aluminum Sliding Window and Door with Screen

Product Attributes



Outer Frame Thickness	1.3mm
Window Panel Thickness	1.3mm
Door Panel Thickness	1.3mm
Width Limit	700mm-1000mm
Height Limit	1800mm-2400mm
Glass Specification	Regular Glass Hollow 5MM+12A+5MM
Hardware Brand	KINLONG

Performance Parameter

U Value (BTU/ft ² · hr · ° F)	0.229
Water Penetration (Pa)	260
Serviceability Limit State (SLS)	1680
Ultimate Limit State (ULS)	2520

The performance parameters in the table have been obtained through AAMA/ CSA/NAFS testing, and the system structure can be adjusted according to project performance requirements to achieve higher parameters.

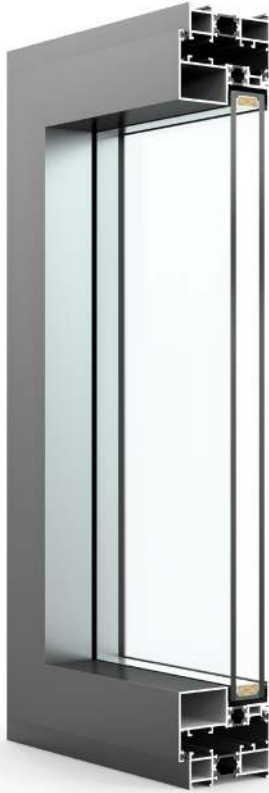
Detail Display





75 series Thermal Break Slim-Frame Aluminum Casement Window and Door

قطاع 75 العازل للحرارة
نوافذ مفصليّة وأبواب



Product Attributes

Opening Method	Fixed, Casement, With Mosquito Net
Min Size	Panel Height: 350 , Panel Width: 600
Max Size	Panel Height: 1200 , Panel Width: 3000
Max Load	100KG
Glass Specifications	5+20A+5
Hardware Brand	STORO

Performance Parameter

U Value (BTU/ft ² · hr · ° F)	0.229
Water Penetration (Pa)	260
Serviceability Limit State (SLS)	1680
Ultimate Limit State (ULS)	2520

The performance parameters in the table have been obtained through AAMA/ CSA/NAFS testing, and the system structure can be adjusted according to project performance requirements to achieve higher parameters.

Detail Display





73-65 series Thermal Break قطاع 65- 73 العازل للحرارة Slim-Frame Aluminum Folding Door باب قابل للطية بإطار نحيف



Product Attributes

Opening Method	Folding and Sliding
Min Size	Door Leaf Height: 2000mm; Door Leaf Width: 400mm;
Max Size	Door Leaf Height: 3500mm; Door Leaf Width: 850mm;
Max Load	Single Leaf : 100KG
Glass Specifications	5mm+27A+5mm
Hardware Brand	Kerssenberg

Performance Parameter

U Value (BTU/ft ² · hr · ° F)	0.229
Water Penetration (Pa)	260
Serviceability Limit State (SLS)	1680
Ultimate Limit State (ULS)	2520

The performance parameters in the table have been obtained through AAMA/ CSA/NAFS testing, and the system structure can be adjusted according to project performance requirements to achieve higher parameters.

Detail Display





116 series Thermal Break Slim-Frame Aluminum Sliding Door

قطاع 116 العازل للحرارة نوافذ سحاب بإطار نحيف



Product Attributes

Opening Method	Sliding
Min Size	Panel Height: 600mm; Panel Width: 400mm
Max Size	Panel Height: 3500mm; Panel Width: 2000mm
Max Load	Single Panel 240KG
Glass Specifications	5+24A+5
Hardware Brand	CMECH

Performance Parameter

U Value (BTU/ft ² · hr · ° F)	0.229
Water Penetration (Pa)	260
Serviceability Limit State (SLS)	1680
Ultimate Limit State (ULS)	2520

The performance parameters in the table have been obtained through AAMA/ CSA/NAFS testing, and the system structure can be adjusted according to project performance requirements to achieve higher parameters.

Detail Display



110 series Thermal Break

Slim-Frame Aluminum Sliding Window

قطاع 110 العازل للحرارة

نوافذ سحب بإطار نحيف

Product Attributes

Opening Method

Min Size 500*1000

Max Size 4000*2000

Max Load 100KG

Glass Specifications 5+20A+5

Hardware Brand

Performance Parameter

U Value (BTU/ft² · hr · ° F) 0.229

Water Penetration (Pa) 260

Serviceability Limit State (SLS) 1680

Ultimate Limit State (ULS) 2520



The performance parameters in the table have been obtained through AAMA/ CSA/NAFS testing, and the system structure can be adjusted according to project performance requirements to achieve higher parameters.

Detail Display





147 series

Aluminum Exposed-Frame Curtain Wall

قلاع 147

أنظمة كارتن وول ظاهرة



Thermal break aluminum visible curtain walls have the following characteristics:

Excellent thermal insulation performance:

By adding heat-insulating materials (such as polyurethane foam) in the middle of aluminum profiles, the bridge-breaking technology effectively blocks the heat conduction of the aluminum, significantly improves the thermal insulation performance of the curtain wall, and reduces energy consumption.

Simple and beautiful:

Its frame is aluminum, and the surface of aluminum has been specially treated, featuring a strong sense of mirror and good anti-seismic performance, which is suitable for the exterior curtain wall of commercial office buildings and other buildings.

Low maintenance costs:

Aluminum profile has good durability and stability, not easy to aging and deformation.



100-65 series

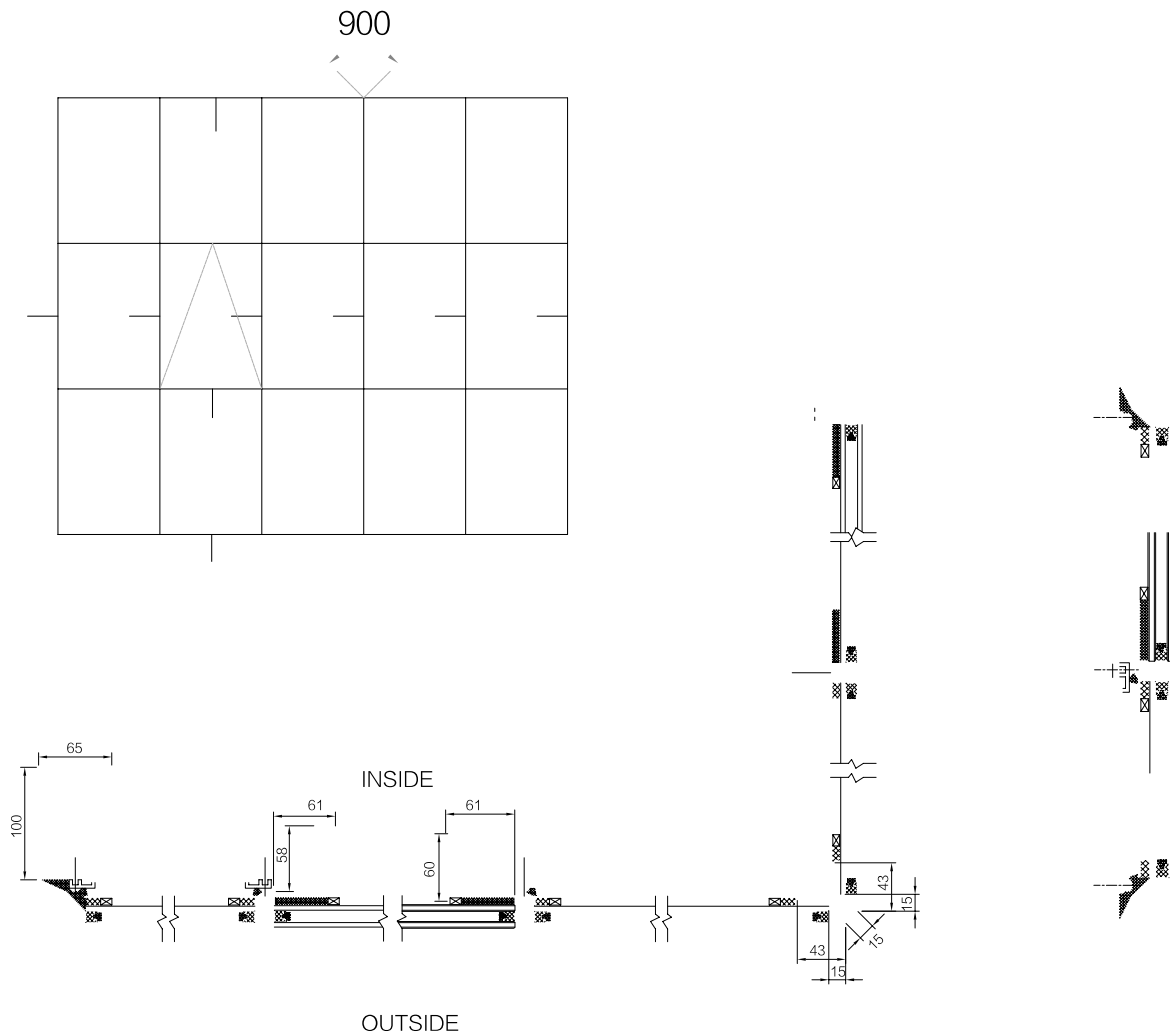
Aluminum Hidden-Frame Curtain Wall

100 - 65 قطاع

أنظمة كارتن وول بإطارات مخفية

Main features of frame type (element type) curtain wall

1. The construction method is flexible and the process is relatively mature. After many engineering practice tests, it is the most adopted curtain wall structure at present.
2. The main structure has strong adaptability, and the installation sequence is basically not affected by the main structure.
3. The joint is treated with sealant, with good water tightness and air tightness, good thermal insulation, sound insulation and noise reduction capacity, and certain resistance to interlayer displacement.
4. Panel materials and unit components are manufactured in the factory, and the service performance of structural adhesive is guaranteed.





100 series Aluminum Entry Door قطاع 100 ابواب مداخل

Materials: Aluminum with frame

Door Panel Thickness: 92mm

Door Frame: 115*75*55mm with sealing strip (fixed width)

Trim Cover: Customizable width based on wall thickness

Craftsmanship: Customizable based on design styles

Color: Spray painting, paint coating, wood grain transfer printing

Glass: Customizable glass specifications

Lock Set: ① Standard: 40*388*7068 anti-pry lock ② Optional: 40*388*7068 integrated three-point lock

Hinges: Flush hinges / Butt hinges / Double-door hinges

Hinge Accessories: ① Surface-mounted hinges ② Surface-mounted hinges installed in a recessed manner ③ Concealed hinge

Threshold: ① Without threshold 15 ② 50/30 ③ 75/55

Optional Hardware/Accessories: Knobs/Handles

Maximum Dimensions: ① Single door: 1250*3300mm, standard with concealed hinges (surface-mounted hinges need ≥ 4 hinges)

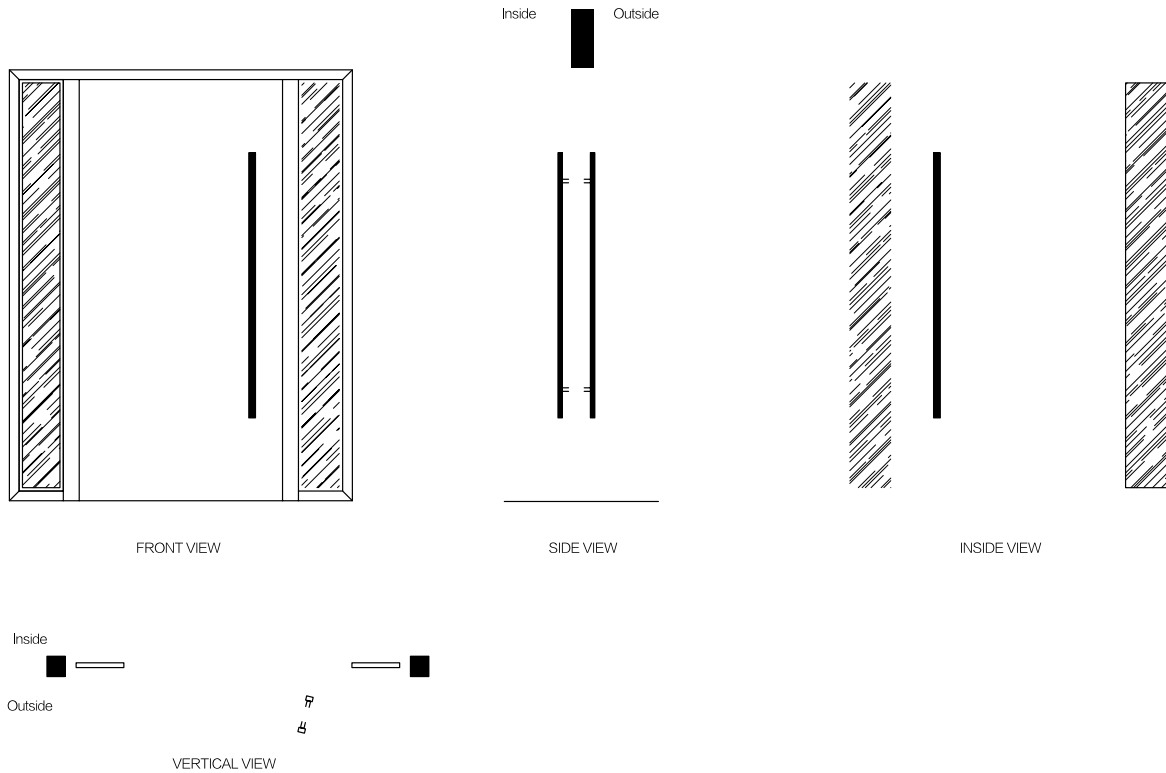
② Double door: 2300*3300mm

Door Panel Aluminum Profile Thickness: Optional 3mm-20mm (standard: 4mm)

Internal Filling: ① Polyurethane fire-resistant board ② Aluminum honeycomb

Filling Function: Thermal insulation, soundproofing, and fire resistance

Door Frame: Integrated welding; detachable assembly available (Ensure compliance with the maximum container loading dimensions).





Exposed 3D Hinge



3D Hinge Base



Concealed 3D Hinge



Concealed Hinge



Concealed Hinge



Concealed Hinge



قطاع 100 ابواب مداخل 100 series Aluminum Entry Door



